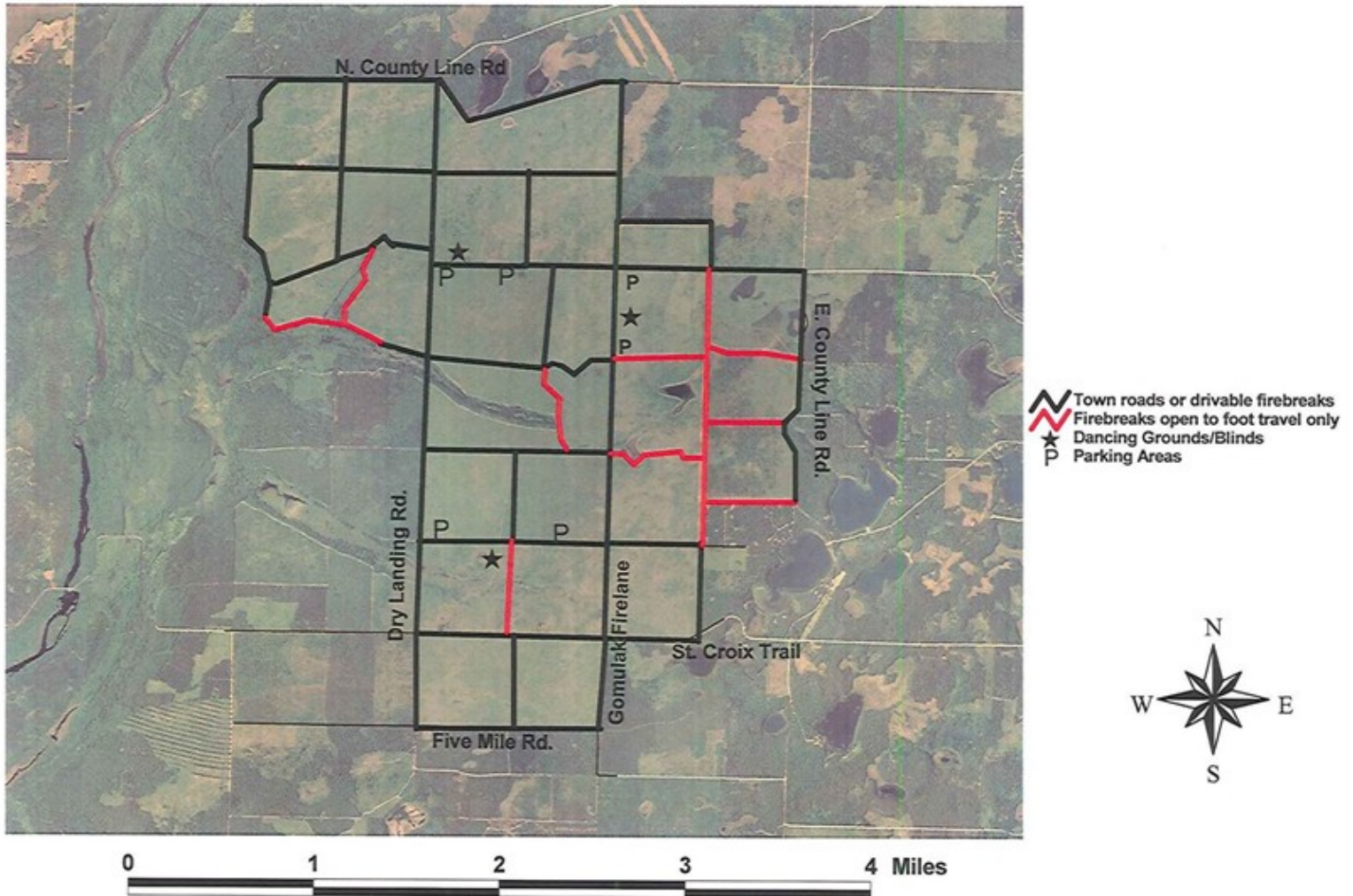


# NBWA Sharp-tailed Grouse Dancing Grounds



## East Blind

Go north on Gomulak Firelane for 1.5 miles to the parking area. Walk north approximately 1/4 mile. Look for the small 'STG Blind' sign. The blind is east of the firebreak.

## North Blind

Go north on Dry Landing Rd. for 2 miles and go east on Clemens Fire Lane to the parking area. Walk east approximately 1/8 mile and look for the 'STG Blind' sign. The blind is north of the firebreak.

## South Blind

Go north on Dry Landing Rd. for 0.5 mile and go east on the firebreak to the parking area. Walk east approximately 1/8 mile to the 'STG Blind' sign. The blind is south of the firebreak.

